

**NEW
FLAGSHIP
PROGRAMME**

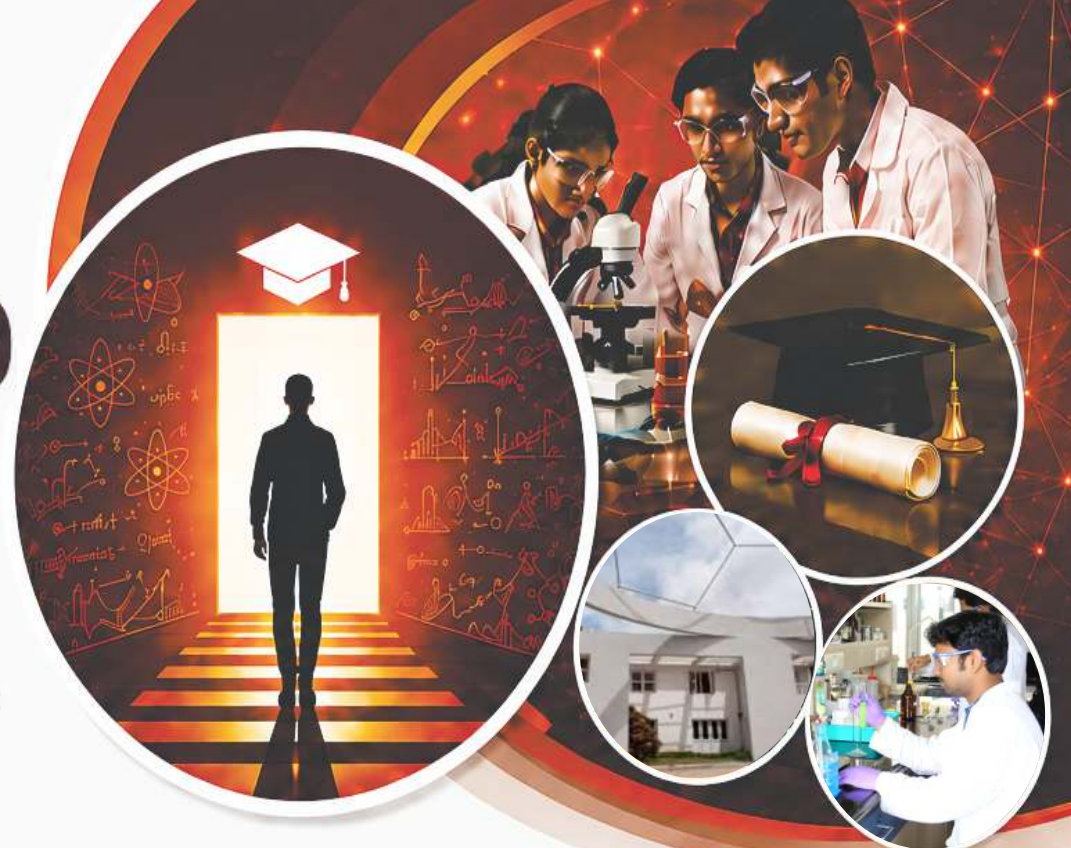
AY 2026-27

Integrated BS (Research) - PhD

INTERDISCIPLINARY SCIENCES



A transformative academic pathway designed for high-impact research training, rigorous coursework, and advanced skill development – aligned with **NEP 2020**.



WHY APPLY?

- Early research exposure
- Structured mentorship
- Seamless progression to PhD.
- Multiple exit options

ELIGIBILITY

- BSc (3-year) / Equivalent
- OR**
- Minimum 120 undergraduate credits
- Minimum 55% marks

YOUR ACADEMIC PATHWAY

AFTER ONE YEAR:



Earn
BS (Research)

THEN CHOOSE TO:



Pursue
One-Year
MS (Research)

OR



Continue to
PhD
(with suitable
fellowship)*



(*As per Centre's norms)



**BE A PIONEER IN
INTERDISCIPLINARY SCIENCES**



**ADMISSIONS BEGIN
AY 2026-27**



LEARN MORE:
<https://www.jncasr.ac.in/admission/degree-programmes/integrated-phd>



Admission to BS (Res) – Ph.D

1 year
CGPA ≥ 5

Leave with
BS(Res) degree

CGPA < 6

BS (Res)
Degree Awarded

Exit Option
Available

CGPA ≥ 6

Path to Ph.D/MS(Res)



YES

4 years (B.Sc+ BS (Res))
CGPA $\geq 7.5?$

NO

Fellowship?

NO

Ph.D Interview
Qualified?

NO

Continue MS(Res)
No Fellowship

YES

Direct Path

YES

Register for Ph.D with
1 year Centre's Fellowship

1 Year

MS (Res)
Awarded

Exit Option
available

≥ 3 years

After 1 year

Fellowship?

No

Exit with
MS(Res)

Ph.D or
MS (Res)+ Ph.D

YES

Fellowship?

NO

Exit with MS(Res)
after fulfilling the
credit requirements

YES

Register for
Ph.D

≥ 3 years

Ph.D

- ✦ Fellowship can be from any funding agencies, or from Centre, or from any project grant available with the PI
- ✦ PI must have the vacancy for the student to register for Ph.D
- ✦ MS(Res) students with CGPA ≥ 8 can appear for Ph.D. Interview